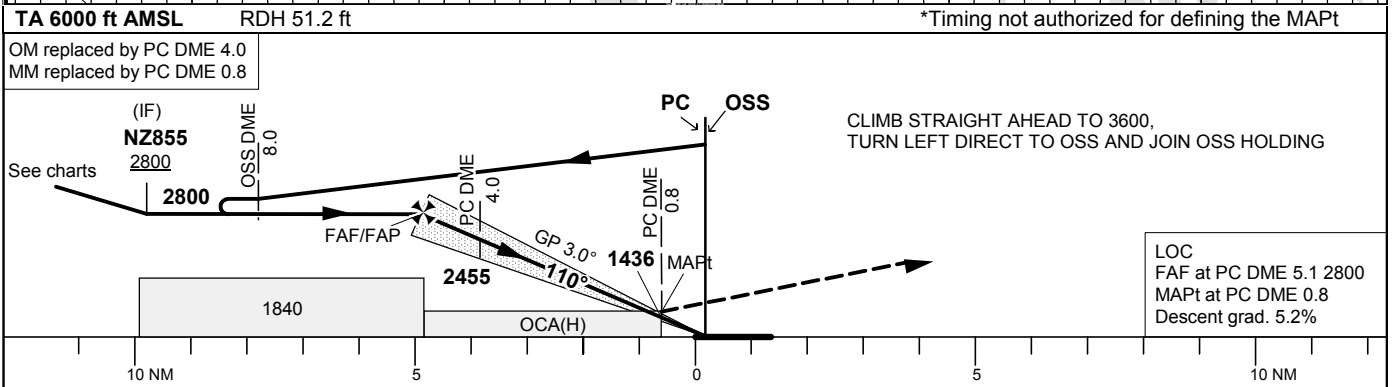
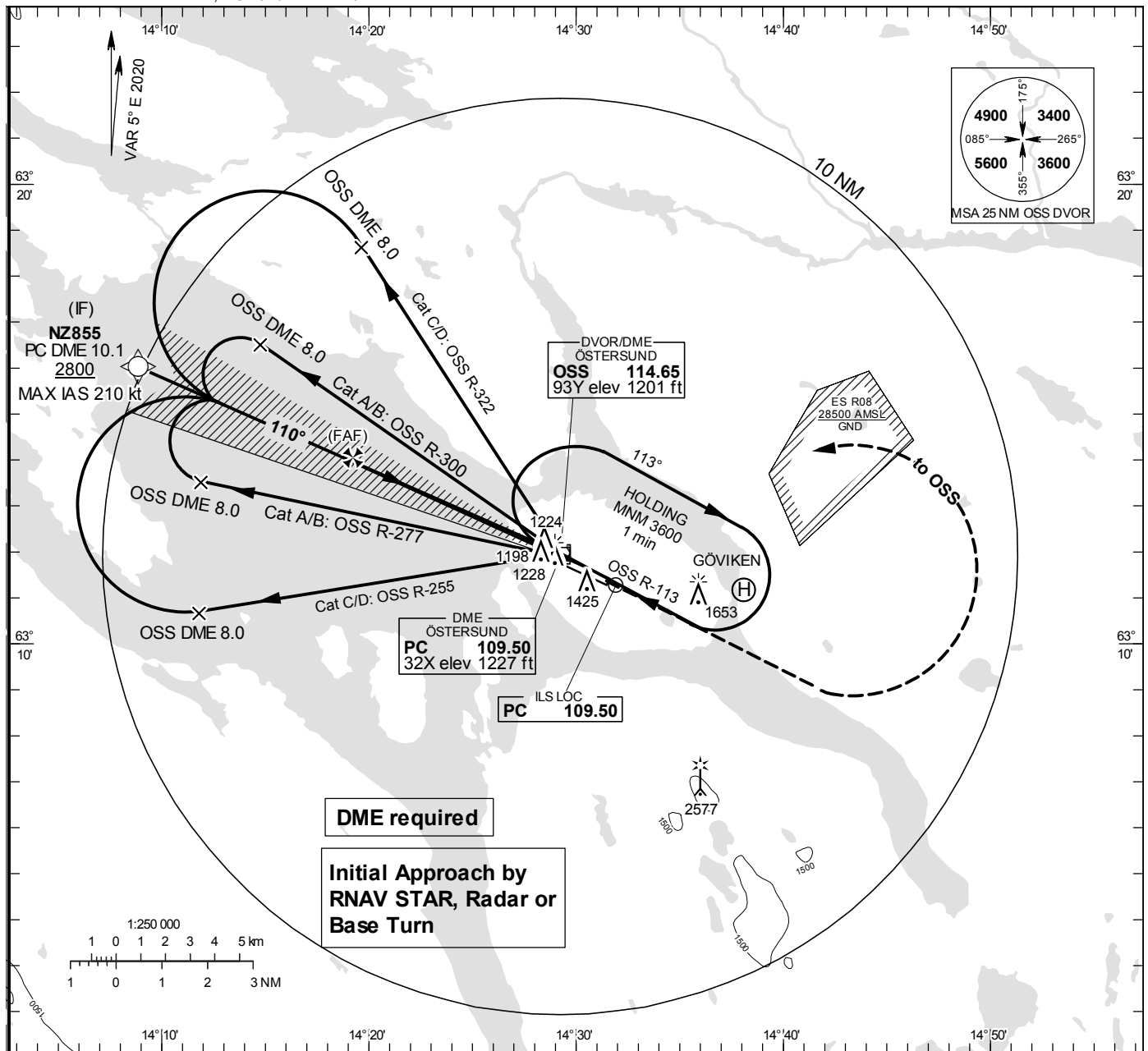


# **ÄRE ÖSTERSUND** **ILS or LOC RWY 12**

## **INSTRUMENT APPROACH CHART – ICAO**

**THR ELEV 1194.3 ft, AD ELEV 1233 ft**  
 OCH are related to THR.  
 Circling OCH are related to AD ELEV.  
 BRG are MAG  
 ALT, HGT and ELEV in ft.

**ÖSTERSUND TOWER 135.655**



OCA (H)					Final approach		LOC Distance FAF-MAPt 4.3 NM*				
Cat of ACFT					DME PC NM		5	4	3	2	1
Straight-in Approach	Cat I	1345(151)	1354(160)	1366(172)	1378(184)	ALT	2774	2455	2137	1818	1500
	Cat II	1247(53)	1258(64)	1273(79)	1290(96)	GS	kt	80	100	120	140
	LOC	1490(290)				Time	min:s	3:13	2:34	2:09	1:50
Circling	Cat III B approved					Rate of descent					
		1740(500)	1970(730)	2070(830)	3000(1760)		ft/min	425	530	635	745

CHANGE: Editorial